



# SOUTHWESTERN PA WATER AUTHORITY

1442 Jefferson Road

P.O. Box 187

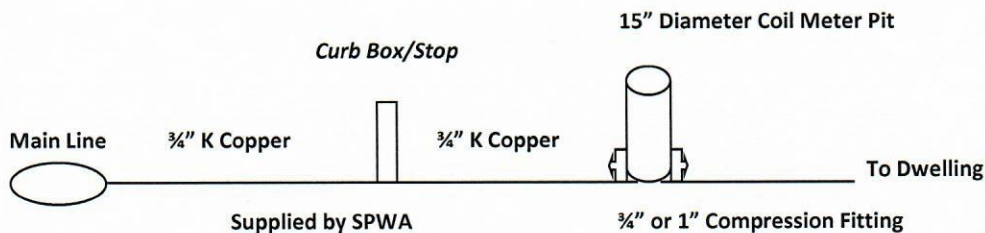
Jefferson, PA 15344

Phone (724) 883-2301 Fax (724) 883-4925

## PRE FABRICATED METER PIT SPECIFICATIONS

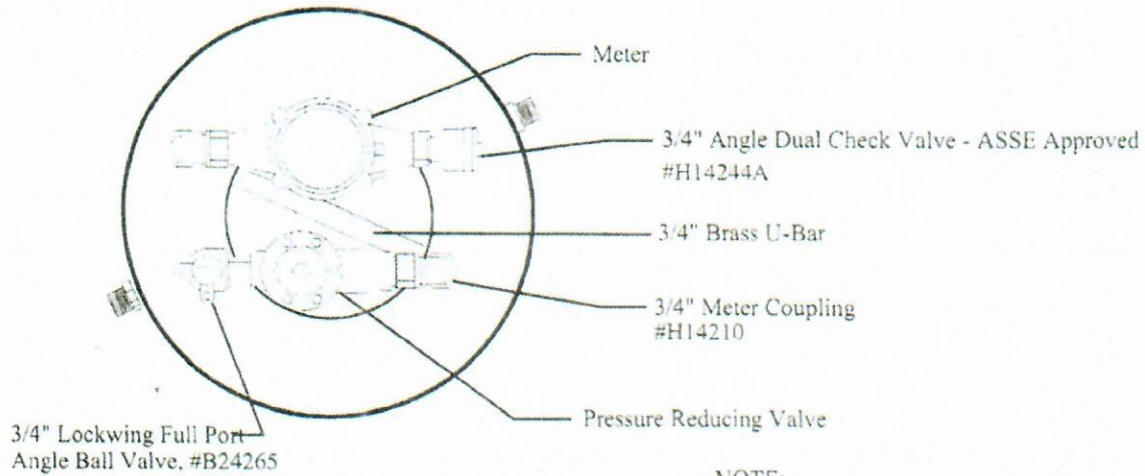
1. All Mueller or Ford Thermal Coil Meter Pits must be purchased from the Authority. The Pit includes the Meter Setter, Backflow Preventor and Pressure Regulator.
2. No sweat fittings shall be used before the meter, only  $\frac{3}{4}$ " and 1" compression fittings provided by the Authority are approved. Larger fitting sizes are available at an additional cost.
3. Meter Pits must be installed with the lid flush with the ground surface.
4.  $\frac{3}{4}$ " K Copper must be used from the Curbstop to the Meter Pit and is provided by the Authority.
5. The distance from the Curb Stop to the Meter Pit shall be approximately five (5) feet. If a situation requires a greater length, it must be approved by the Authority.
6. It is the customers responsibility to make sure the Meter Pit remains flush with the ground, the lid remains on the Meter Pit, and the foam insulation disk is in place. This is very important to prevent the meter from freezing in the winter months.

**\*\*SEE REVERSE SIDE FOR METER PIT ILLUSTRATION\*\***



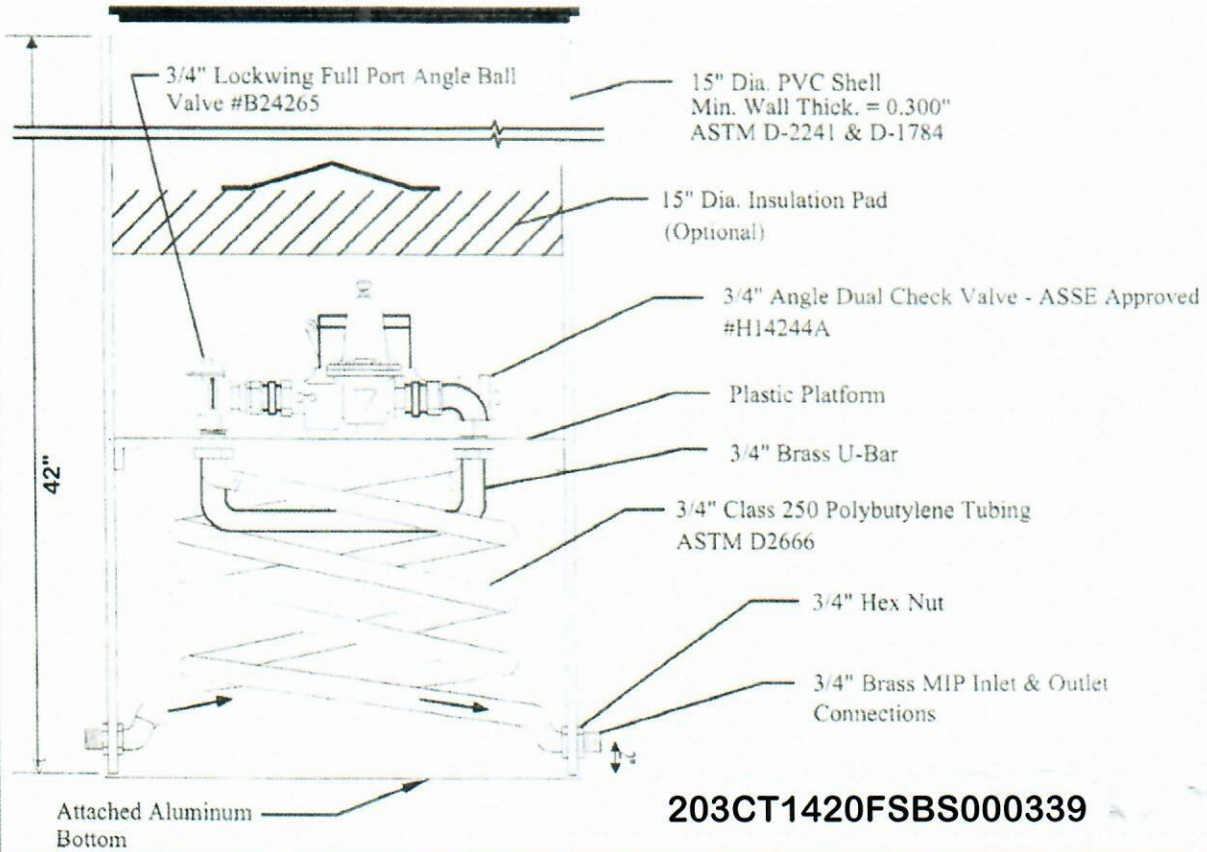
# MUELLER / HUNT

## 15-Inch Diameter Coil Tandem Meter Pit for 5/8 x 3/4-Inch Meter



**NOTE:**  
Meter and PRV not included.

15" Dia. Cast Iron Lid  
Side Locking, #282924



203CT1590FSBS.dwg

**203CT1420FSBS000339**